

Building construction will enhance research at Coastal Plain Station

Research will be enhanced by building construction, which is underway or soon to be in progress in three locations on the Coastal Plain Experiment Station.

The Vidalia Onion Research Laboratory, located on Entomology Drive, is nearing completion. Construction began in the spring of this year on the 18,500 square foot facility. The experiment station has received over \$800,000 to date for the project. Monies came from lottery funds, USDA/CSRS, and the Vidalia Onion Commission.

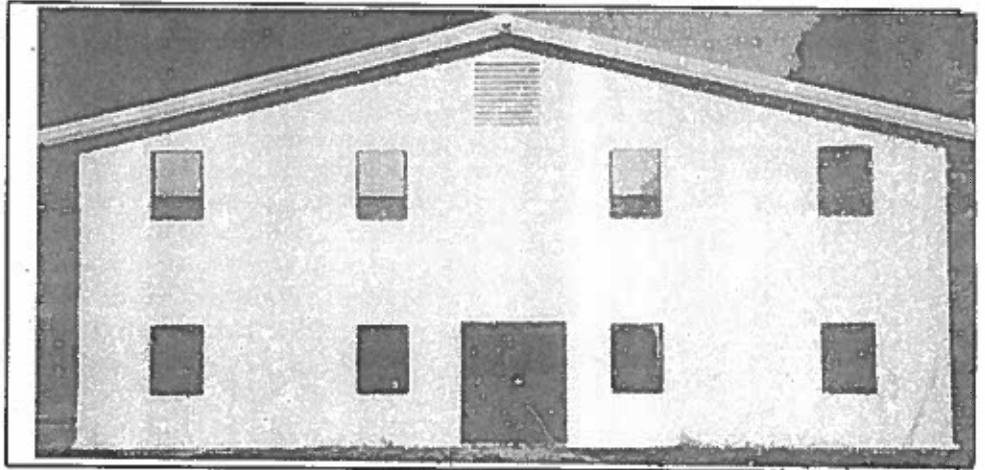
The building is laid out in zones, which allows for research to be conducted on different applications of cold storage. This includes a shelf life area, which is temperature control only; a cold storage area, four units which are temperature and humidity controlled; and controlled atmosphere (CA) storage cells, which involve temperature, humidity and gas composition studies. An atmosphere control center will house all control for the CA cell and cold rooms.

Quality assay labs will be built in the next phase of construction. This will enable the researchers to test their samples in-house rather than sending them to other locations. Construction of the refrigeration, controls, and site is expected to be completed by October 1. The assay lab construction will follow with input by the new lead scientist who will fill the position vacated by Dr. Doyle Smittle.

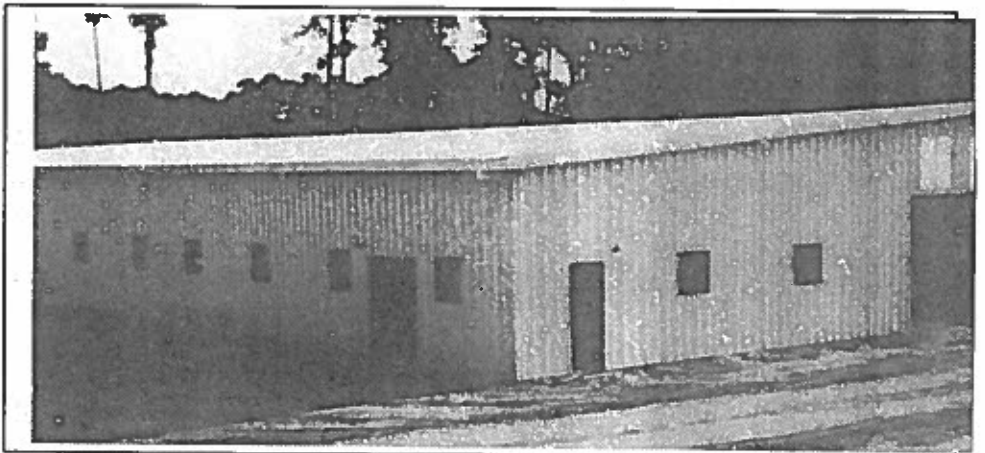
The Plant Pathology Head House is nearing completion as well. Located on the site where the Mycotoxin Lab was located before it burned, this 5,000 square foot building should be ready for occupation by January 1, according to Physical Plant Superintendent Wayne Kilgore.

The facility will be used to support the greenhouse research in the area near the building. It will provide more accessible laboratory space. It also has a large preparation area and over head storage.

The total cost of the building is estimated at \$400,000.



The Plant Pathology Head House, located on Tobacco Road, will be used to support greenhouse research in the area. It will be ready for occupation January 1, 1995.



The Vidalia Onion Research Lab, located on Entomology Drive, is nearing completion. Construction is expected to be finished by October 1.

The Natural Products Lab, which will be built across from the Plant Science Building on Plant Science Drive, will replace the Mycotoxin Building which burned two years ago. This 5,500 square foot facility will house the staff which was located in the original building.

Bids were opened on August 9 with Mann Construction Company as low bidder.

The first phase of the building, which is the shell of the building and the floor, should be completed by January 1, Kilgore said.

The second phase, which is the interior construction of the office and lab space should be complete by spring of 1995. The total cost of the building is estimated at \$450,000.